



WEEKLY UPDATE – Aug. 29

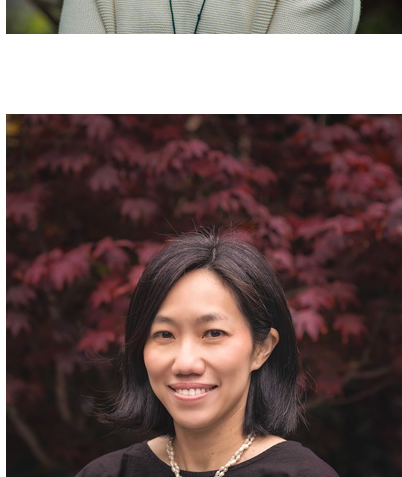
Who We Are

Welcome back everyone! In this newsletter, you'll find our staff member profiles. Feel free to say "hi" if you see us around campus! Note that we have some new team members, so we recommend that you review the [ISSS staff web page](#) to find the most current advising populations. As always, remember that you can connect with us via **email**, reach us by phone at **(415) 422-2654**, talk online with a team member using our chat feature (Glia), or **make a Zoom appointment with your ISSS adviser**.



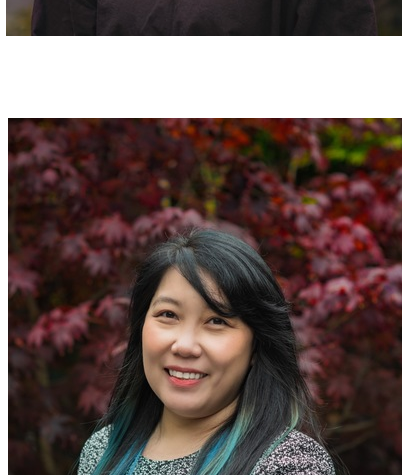
Senior Director

Marcella Pitcher DeProto, senior director of ISSS, has been working in international education since 2003 and has been at USF since 2007. Marcella holds a master's degree in international education. She loves working with international students because it allows her to stay connected to the world's cultures while living in the Bay Area.



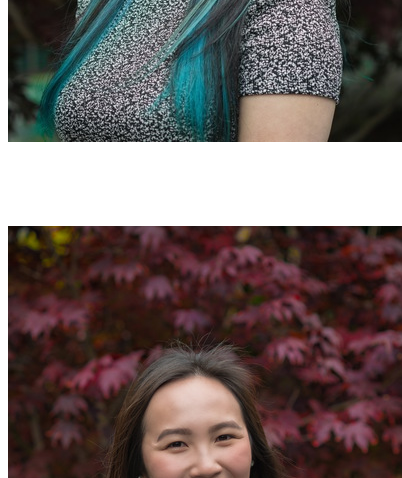
Associate Director

Ying-Sing (Cynthia) Lai, associate director of ISSS, has been in the international education field for 11 years. She is originally from Taiwan and received her master's degree in integrated marketing communication in the U.S. Cynthia loves to work with international students and watch them grow and learn during their time at USF. She has traveled to more than 15 countries and enjoys exploring different cultures.



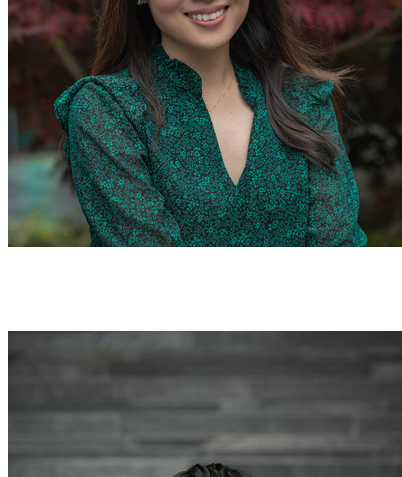
International Student Adviser

Tina Ricafrente is the SEVIS administrator and an international student adviser at ISSS. She has worked in international education since 2008, and holds a master's degree in international education and a bachelor's degree in psychology. Tina is a Bay Area native but has lived and traveled in Japan, South Korea, and Europe. She enjoys learning about different cultures, especially through food, music, travel, and language.



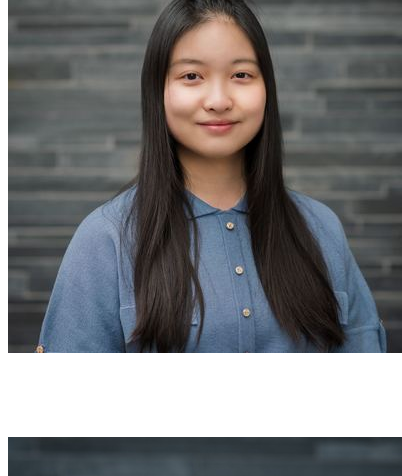
International Student Adviser

Christy Li is an international student adviser with ISSS and staff adviser for the International Student Association. Originally from Hong Kong, she was an international student at USF. Christy holds a master's degree in international and multicultural education and a bachelor's degree in dance and psychology. She is delighted to be supporting international students during their time at USF.



International Student Adviser

Michelle Sun is a new international student adviser at ISSS. She lived in mainland China for 15 years and stayed in the Bay Area for more than 7 years. In daily life, Michelle enjoys cooking, gardening, and traveling. She's very enthusiastic to serve international students and help them get better experiences in their school life.



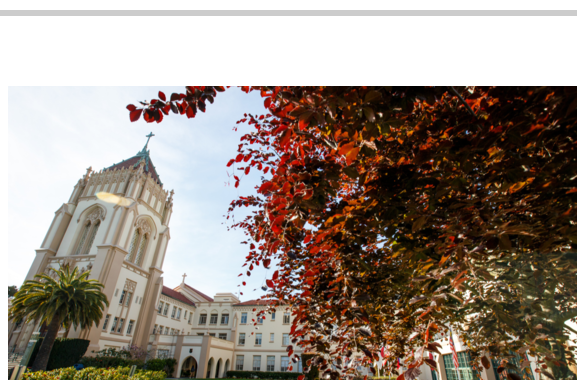
Program Assistant

Louise Li is the new program assistant for ISSS. She was born and raised on the island of Saipan, Northern Mariana Islands, a U.S. territory. Despite being a domestic student, she understands what it's like to be far away from home and how difficult it is to integrate into a new culture and environment. She is excited to support international students as they transition into a new stage of their life at USF!



Cafe International

Cafe International is a community space for international students to make friends and learn to live in the multicultural USF campus. These events will take place on **Tuesdays from 3:30–4:30 p.m.** on the following dates: Sept. 6, Sept. 20, Oct. 4, Oct. 25, and Nov. 1. Come and enjoy a stress-free coffee break and chat about food, music, pop culture, and anything and everything to help you recharge. **Contact the Cultural Centers for more info »**



Office Closure

Reminder that the ISSS office will be closed on **Monday, Sept. 5** in observance of the university holiday. We will return to normal office services on Tuesday, Sept. 6. Our office hours are Mondays–Fridays from 9 a.m.–5 p.m. You can connect with us via **email**, reach us by phone at **(415) 422-2654**, or **schedule a Zoom appointment** with your ISSS adviser.



ISA General Meeting

New on campus? Looking to connect with old friends? Come to International Student Association's first general meeting of the semester! The primary organization representing the entire international student body at USF is the International Student Association (ISA). ISA promotes cultural education, advocates for the USF international student body, and provides a social community by being the voice of the international students, creating social interactions, and developing educational opportunities for cultural enrichment. If you have any questions, you can contact them on [Instagram](#) or at isa.usfca@gmail.com



Student Activities

Looking for something fun to do this weekend? Take a look at the activities planned for **Welcome Weekends**. They help new students connect with communities of support on campus as well as interact with other new, incoming students. Participants must register using their ActiveNet account using a special coupon code given during orientation. Welcome Weekends are created for **incoming first-year and transfer students ONLY**. **Learn more »**

ISSS OFFICE RESOURCES

Requesting a Document from ISSS?

If you are requesting an immigration document or letter from our office, remember that we request **ten business days** to process requests. Make sure you plan accordingly so you have enough time to receive your document before you need it. All ISSS requests should be submitted through the **MyISSS student portal** (select the home icon, site home and then requests on the left hand menu). You can view our **MyISSS Student Handbook** for assistance with your submission.

Adviser Appointments and Workshops

Appointments can be made online. Please visit the **ISSS website** to schedule an appointment. Appointments are still booked in 30-minute increments. To schedule a workshop, select workshops from the first menu option in our scheduler. Students must complete an OPT workshop before applying for OPT.

Connect with ISSS through Facebook »

Join the conversation **#USFCA**



UNIVERSITY OF SAN FRANCISCO
International Student and Scholar Services

(415) 422-2654
USFCA.EDU
DIRECTIONS
CONTACT US

CHANGE THE WORLD FROM HERE